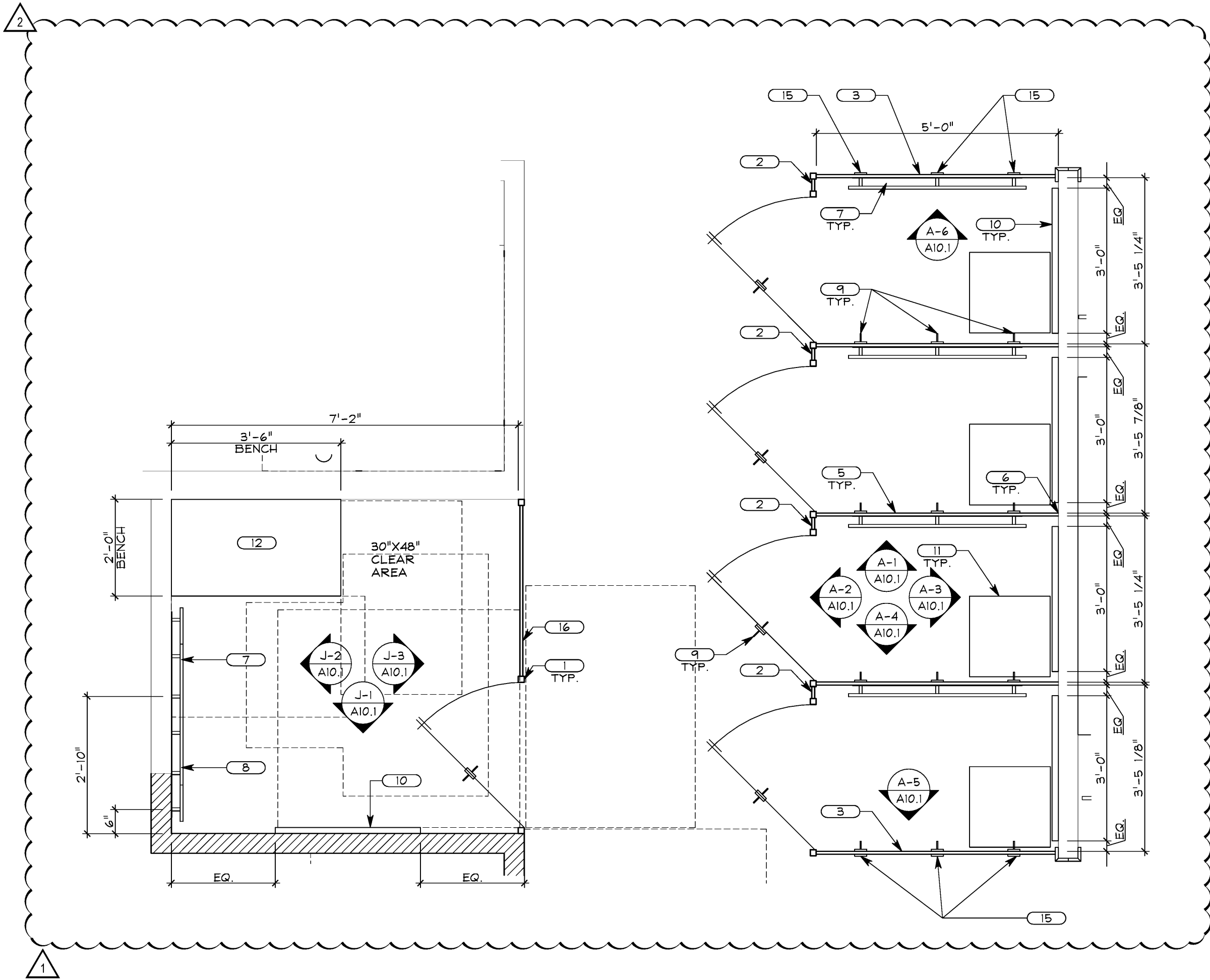
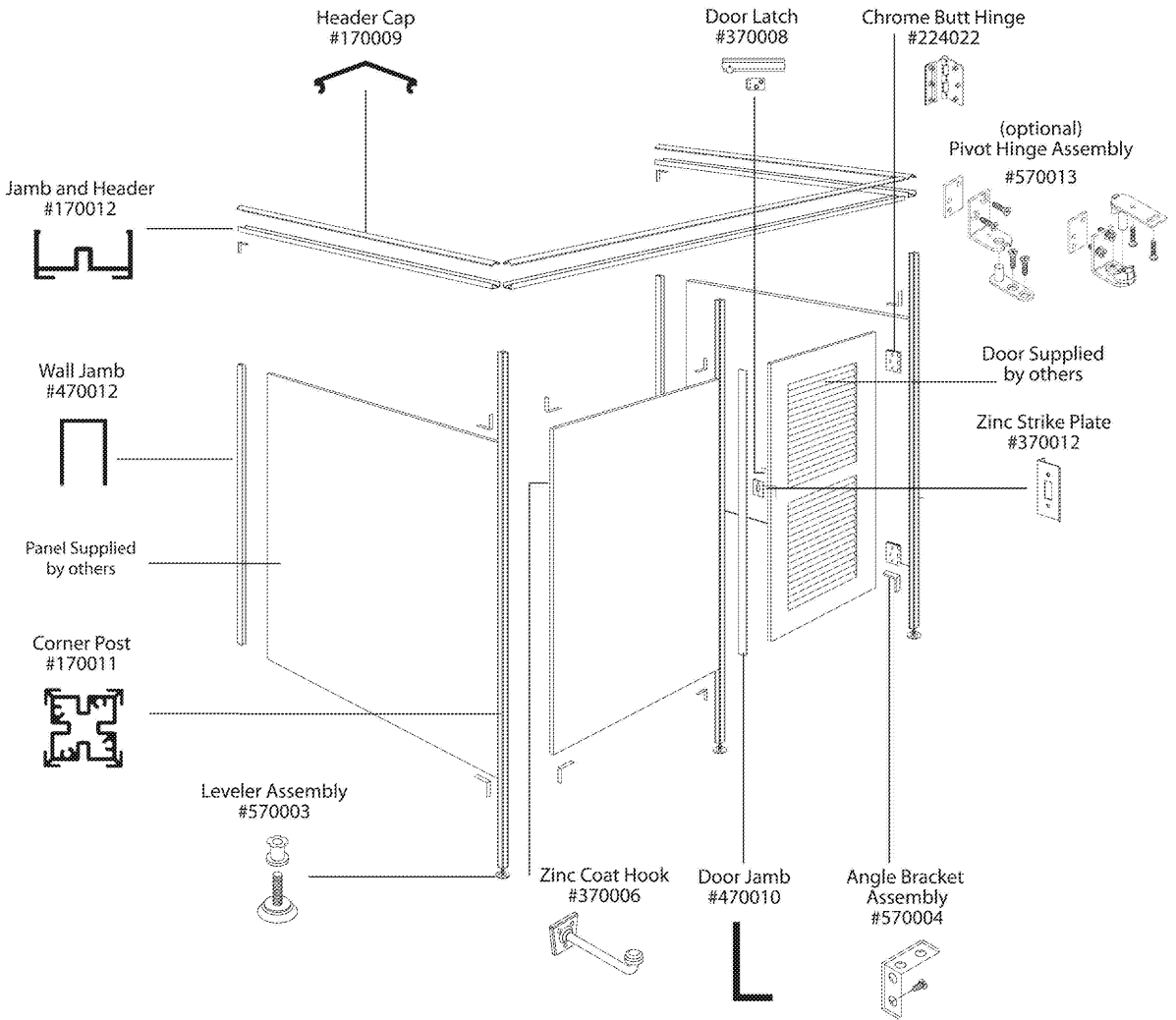


General Description: Stylmark offers components and hardware that can be used to create a variety of custom fitting room configurations. Fitting Room extrusions are sold in stock length or material may be fabricated to meet your specific design requirements.

Applications: Retail fitting rooms, restrooms, partitions

Material: Anodized aluminum
Anodized Finish: See Stylmark Color Library
Panels & Doors: Customer supplied or ask us to work with you to create a custom design



- 1 CORNER POST (#170011)
- 2 3" WIDE X 90.5" TALL PANEL
- 3 60" WIDE X 96" TALL PANEL. G.C. TO CUT PANEL TO MAINTAIN 5'0" FROM FACE OF DRYWALL.
- 4 72" WIDE X 90.5" TALL PANEL
- 5 60" WIDE BY 90.5" TALL PANEL CUT TO SIZE IN FIELD. G.C. TO VERIFY WITH P.M.
- 6 WALL JAMB (#470012)
- 7 HANG BAR - MOUNT AT 5'-6" A.F.F. (CENTER ON PANEL)
- 8 HANG BAR - MOUNT AT 4'-0" A.F.F.
- 9 CLOTHING HOOK - REFER TO ELEVATIONS
- 10 FITTING ROOM MIRROR
- 11 FREESTANDING FITTING ROOM BENCH
- 12 ACCESSIBLE FITTING ROOM BENCH AT 18" A.F.F. - G.C. TO SECURE TO WALL
- 13 10'-1/2" WIDE X 90.5" TALL PANEL
- 14 CLOTHING HOOK-INSTALLED ON BACKSIDE OF MIRROR.
- 15 BLANK PUCK INSTALLED ON BACKSIDE OF HANGBAR.
- 16 48" WIDE X 90.5" TALL PANEL CUT TO SIZE IN FIELD. G.C. TO VERIFY WITH P.M.

G.C. TO APPLY A SMALL BEAD OF PAINTABLE BLACK ACRYLIC CAULK TO THE PERIMETER OF MIRROR (WHERE EDGE MEETS WALL) AND AT ALL LOCATIONS WHERE SEAMS EXIST INSIDE OF THE FITTING ROOMS. WIPE OFF ANY EXCESS CAULK IMMEDIATELY AFTER INSTALLATION (THIS IS TO ENSURE THE PREVENTION OF HIDING PRICE/SECURITY TAGS IN CONCEALED SPACES) - TYPICAL FOR ALL FITTING ROOMS.

NOTE: ALL HAND ACTIVATED DOOR OPENING HARDWARE SHALL BE CENTERED BETWEEN 34" TO 44" AFF AND SHALL BE OPERABLE WITH A SINGLE EFFORT WITHOUT MEANS OF TIGHT GRASPING, PINCHING OR TWISTING OF THE WRIST. THE FORCE REQUIRED TO OPERATE INTERIOR DOORS SHALL BE A MAXIMUM OF 5LBS.

G.C. TO ENSURE ADEQUATE F.R.T. IN WALL BLOCKING FOR ALL WALL MOUNTED ITEMS.

NOTE: ACCESSIBLE FITTING ROOM TO COMPLY WITH TITLE 24 ACCESSIBILITY REQUIREMENTS

NOTE: STANDARD PANEL SIZES ARE 10" WIDE, 20" WIDE AND 60" WIDE. IF PANEL IS A DIFFERENT WIDTH THAN STANDARD SIZE G.C. IS TO CUT TO SIZE IN THE FIELD. VERIFY WITH P.M. BEFORE MAKING ANY CUTS.

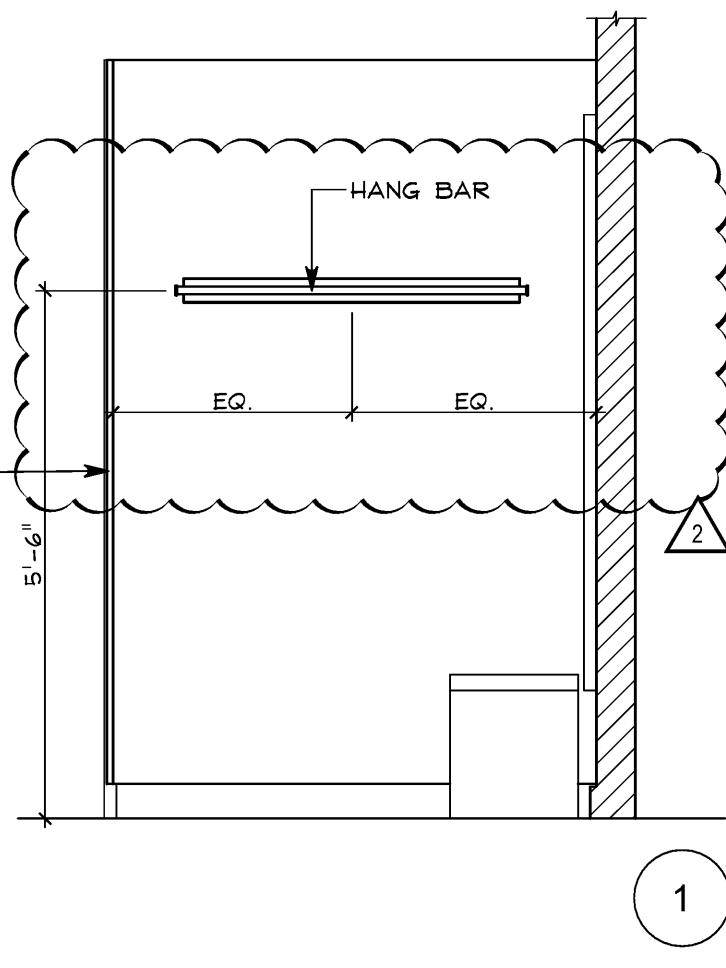
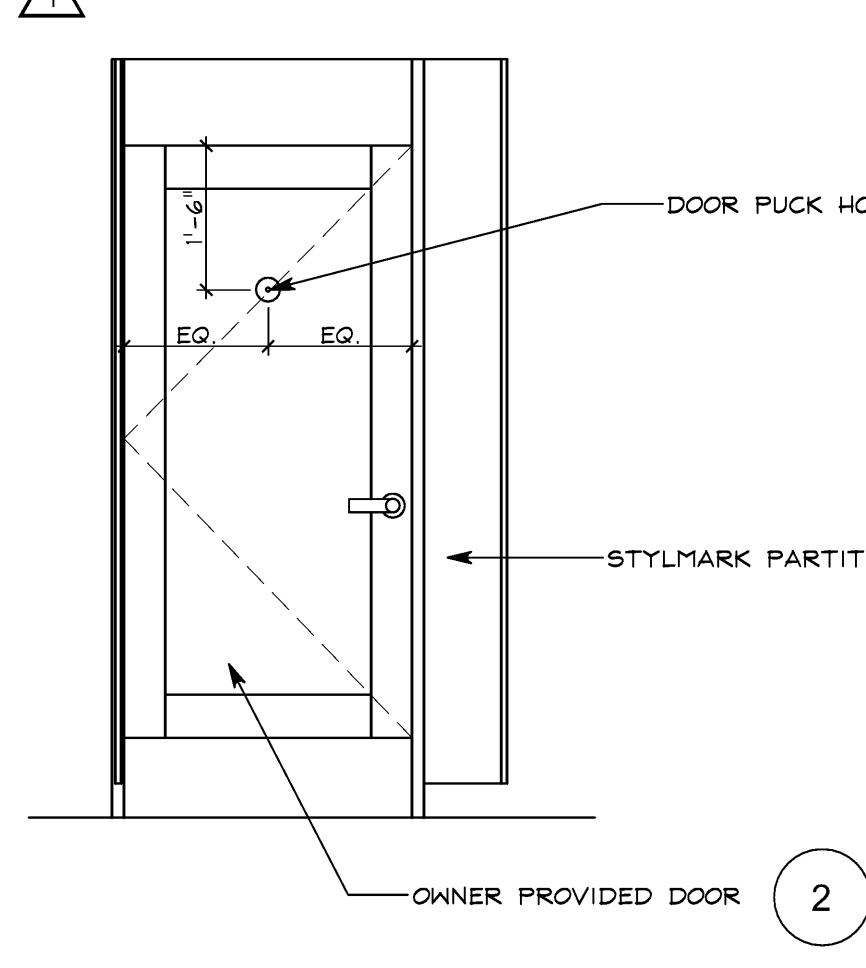
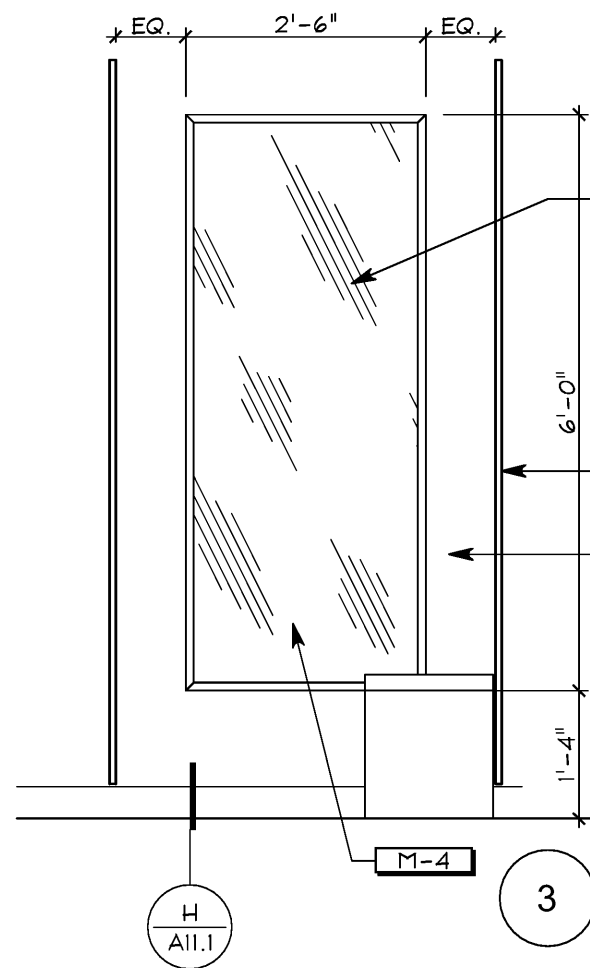
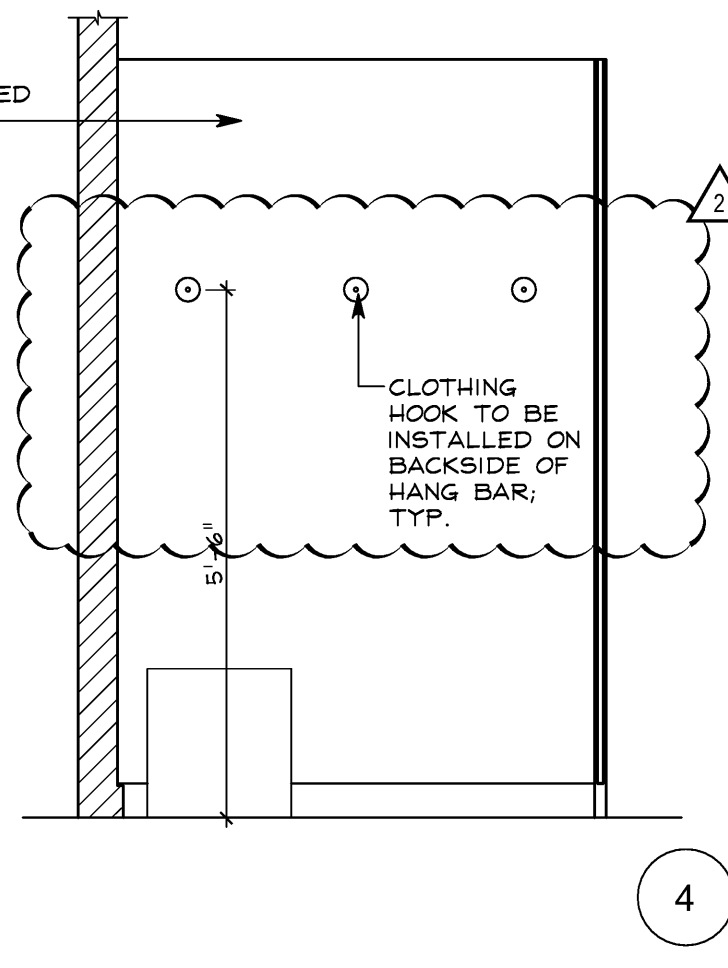
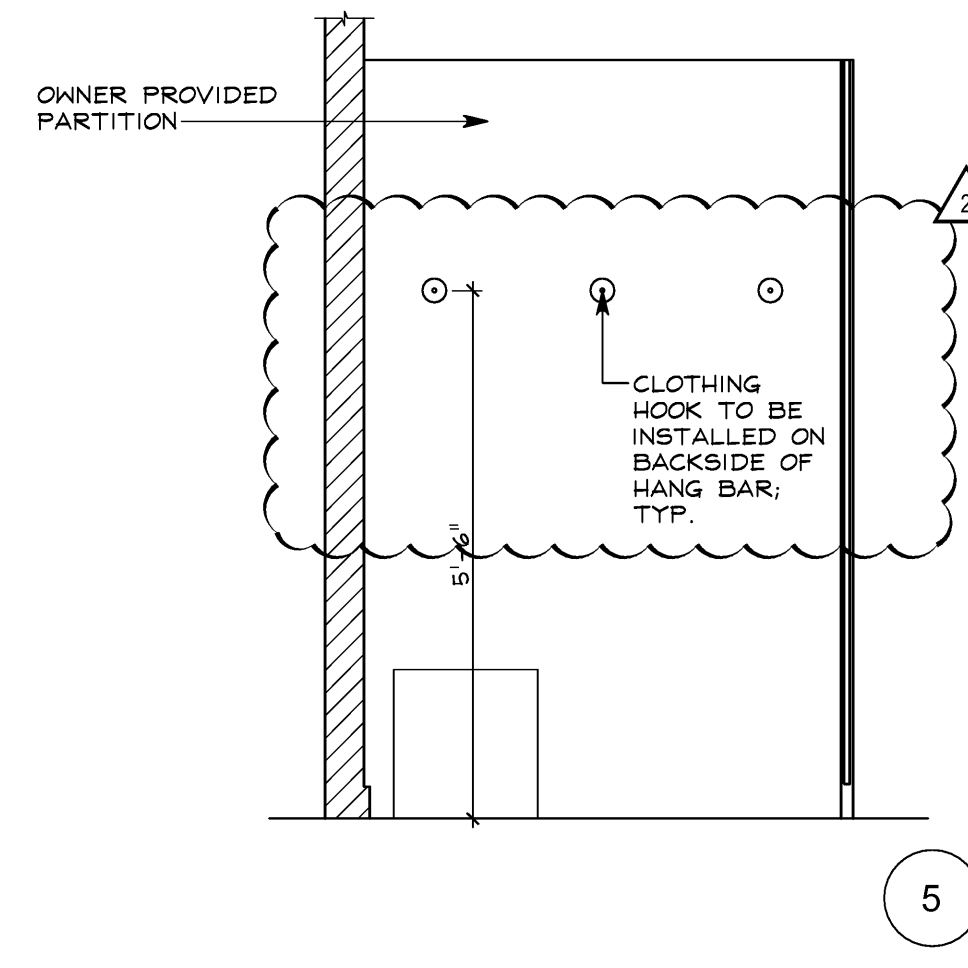
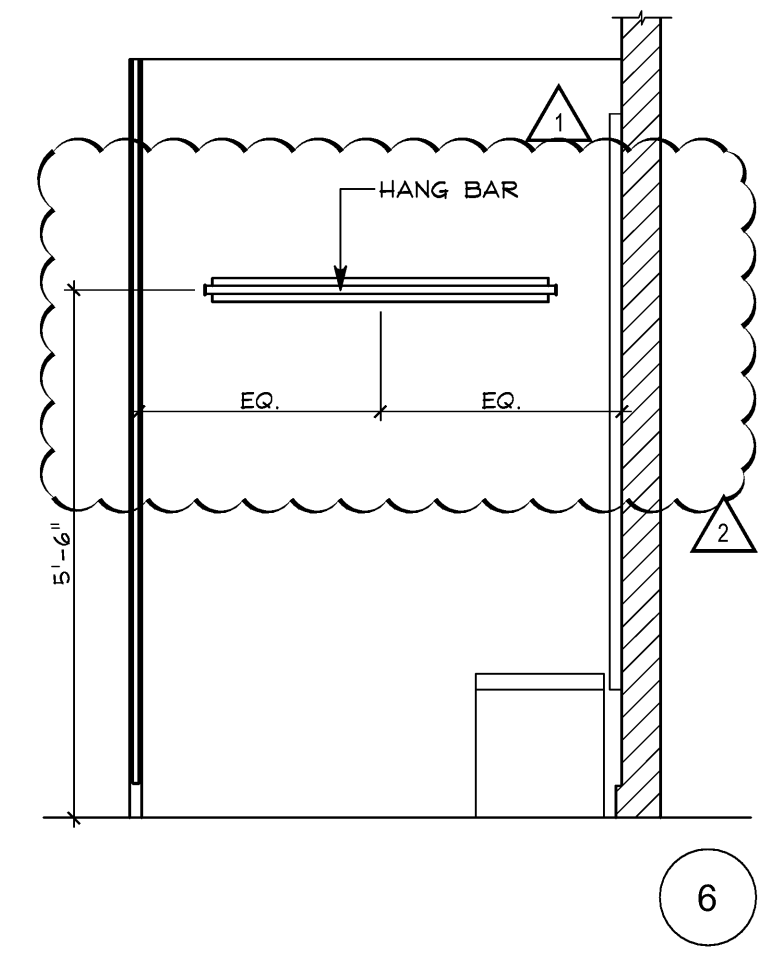
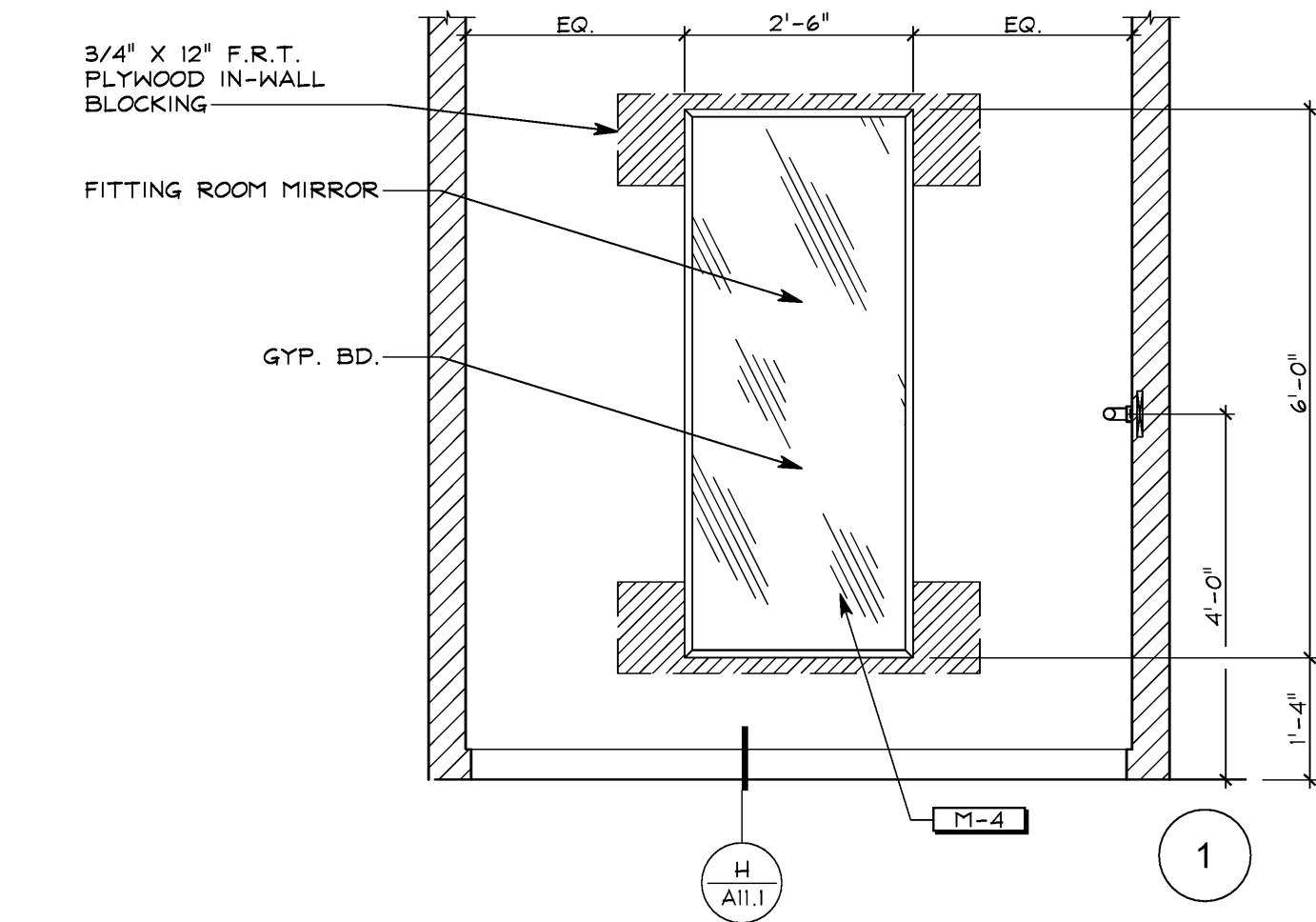
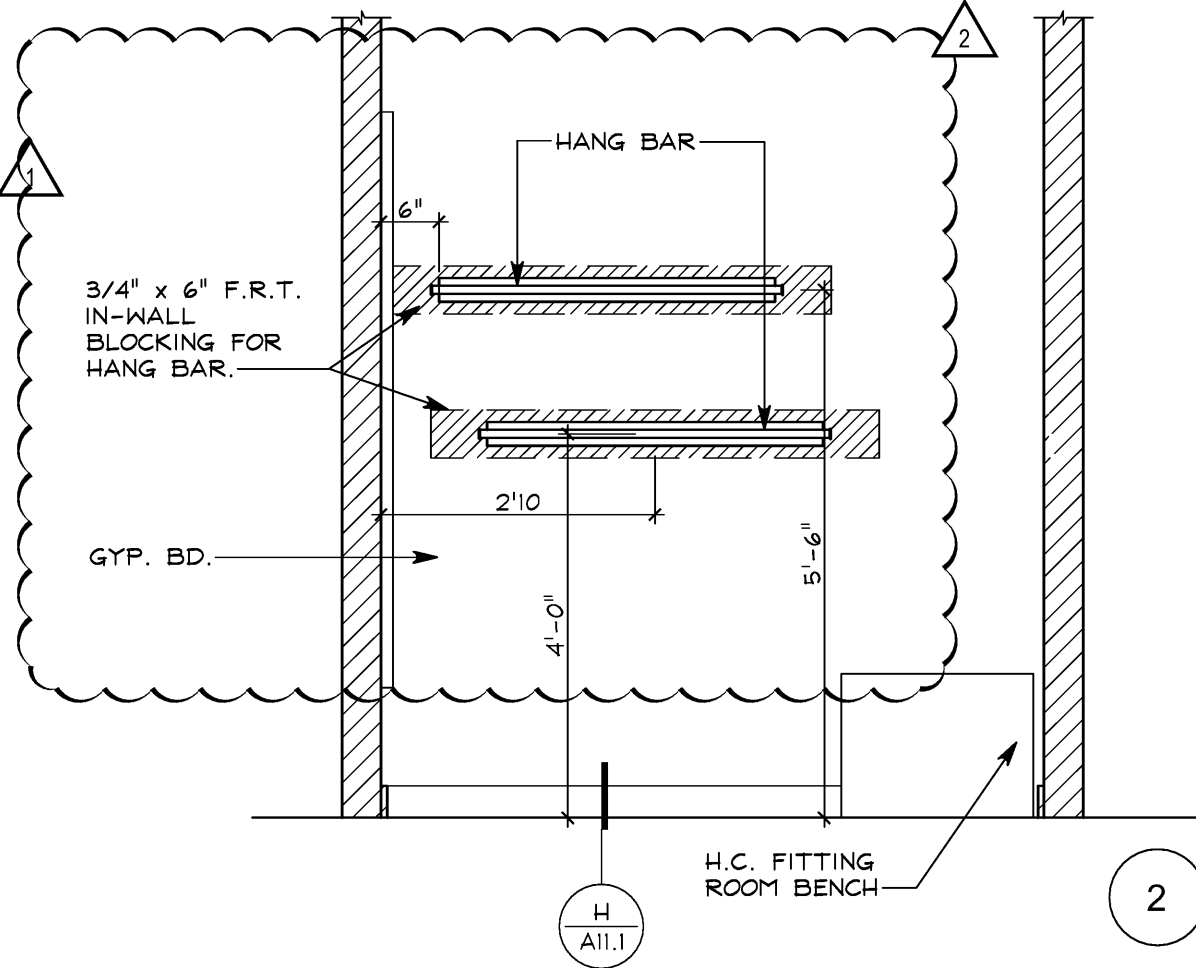
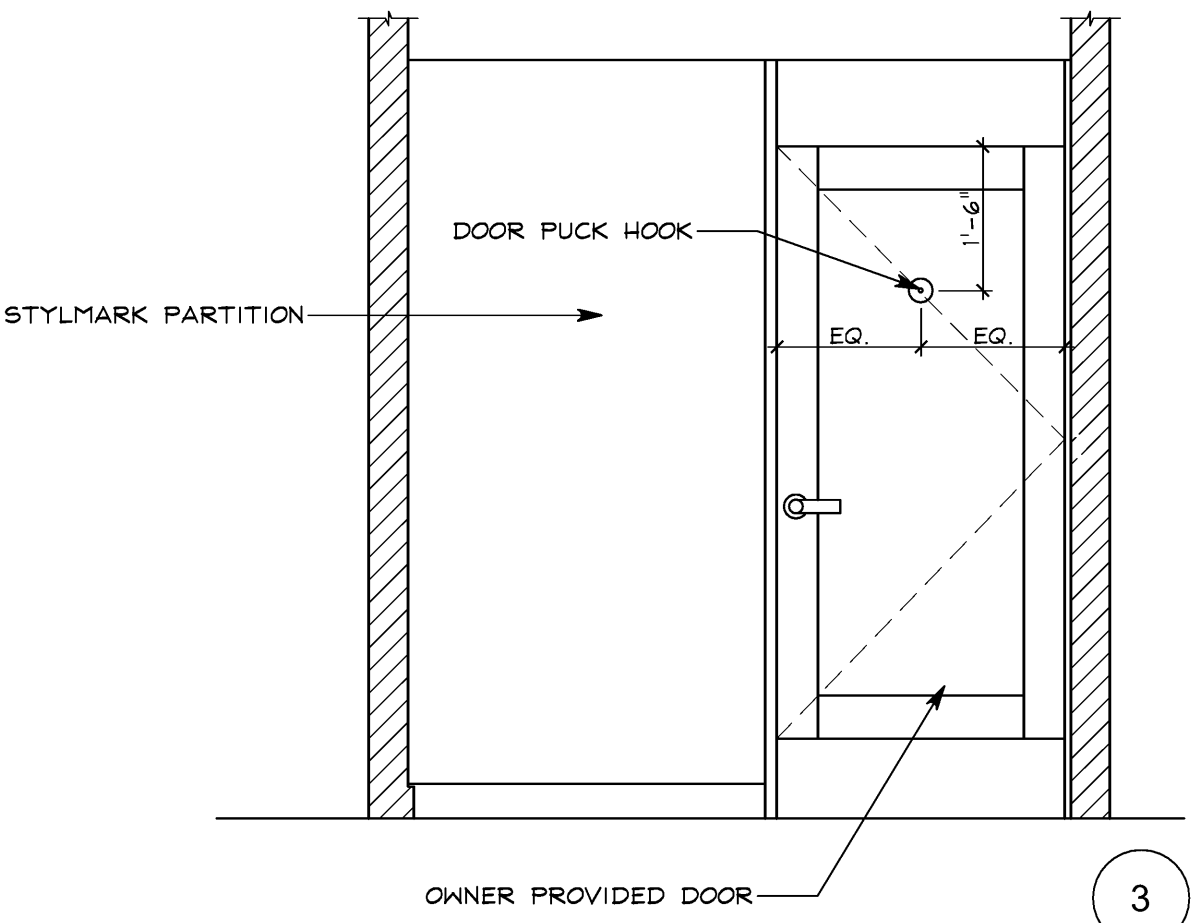
TYPICAL FITTING ROOM COMPONENTS

N.T.S.

ENLARGED FITTING ROOM PLAN

1/2" = 1'-0"

C



ACCESSIBLE FITTING ROOM ELEVATIONS

1/2" = 1'-0"

J

FITTING ROOM ELEVATIONS

1/2" = 1'-0"

A

FRCH

DESIGN WORLDWIDE

311 ELM STREET
SUITE 600
CINCINNATI, OH 45202
513 241 3000
www.frch.com

chico's

11215 METRO PARKWAY
FT. MYERS, FL. 33966

Soma

STORE NO:
5062

PROJECT LOCATION:
MIROMAR OUTLETS
10801 CORKSCREW ROAD
ESTERO, FL 33928
SPACE #: 407

DESIGN TYPE:

REVISIONS:

REQUIRED BY:	DATE
1 LKM OWNER COMMENTS	06/15/17
2 LKM OWNER COMMENTS	07/25/17

*INDICATES NO REVISION TO THIS SHEET

DRAWN BY: ECG
CHECKED BY: CMB

ELITE CONSTRUCTION GROUP
LAKE JACKSON, TX
PHONE: 979-285-0712
NOTE: THESE PRINTS HAVE BEEN REDUCED
BY 50 PERCENT. SCALE WILL BE 50 PERCENT
OF WHAT IS NOTED ON PLANS

DRAWING TITLE:
FITTING ROOM
DETAILS

DATE ISSUED:
06/06/2017

PROJECT NO:
034138.000

DRAWING NO:

A10.1